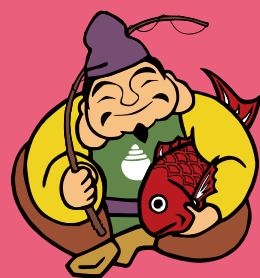


Ebisu Photo Rally

Let's go to Ebisu Station
after taking three photos!

After getting this Ebisu
Guide Book, let's take
photos with three Ebisu
statues. If you bring them
to Ebisu Sta., you can get
a nice present.



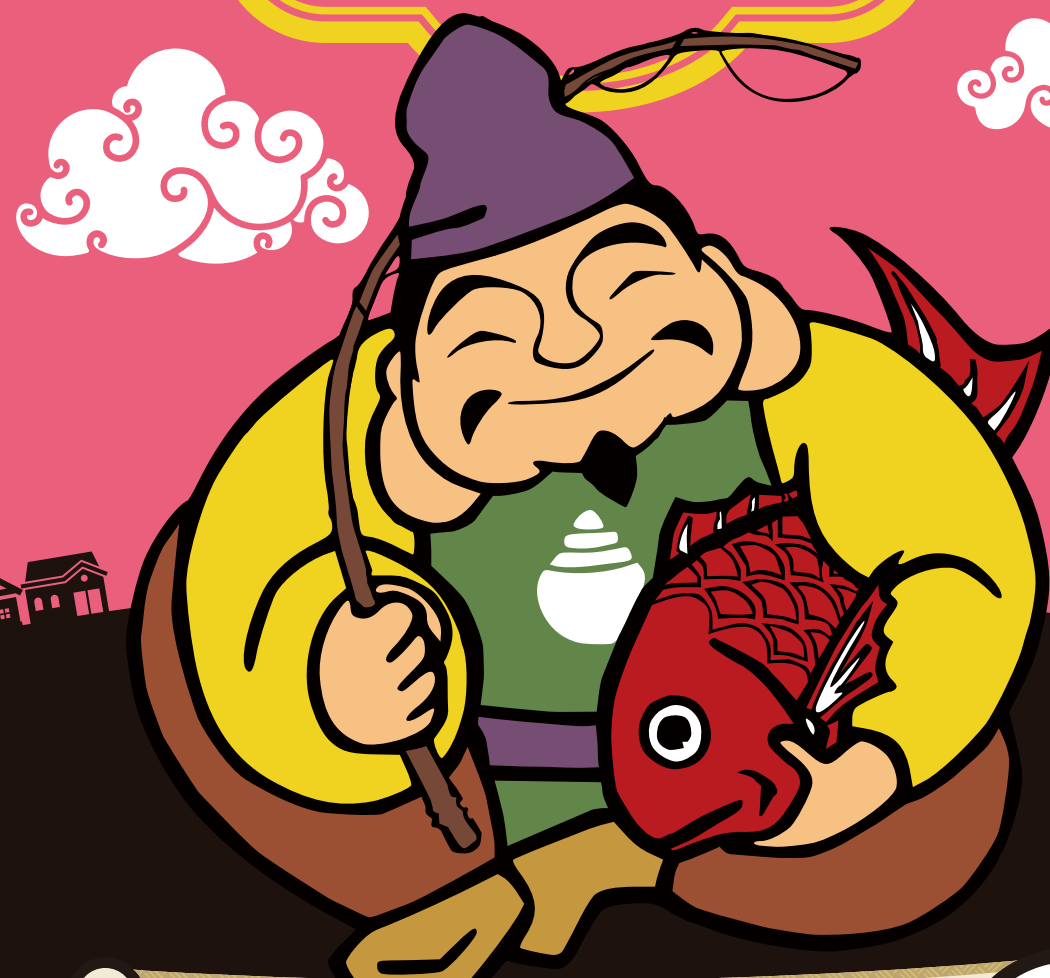
Please stamp at the Ebisu Station.

Saga City

EBISU

EBISU GUIDE BOOK

English



🐟 Saga Ebisu is Japan's No.1

🐟 Introducing recommended routes to
visit Ebisu statues and enjoy sight-
seeing and delicious food in Saga!!

What is Ebisu?

Ebisu is one of the Seven Gods of Fortune who are well-known as gods who bring good fortune. The Seven Gods of Fortune have been familiar in Japan as Gods with different blessings and worshipped since olden times. But in fact, they consist of members with international characters, some of whom are from India and China. Ebisu is the only god to originate from Japan.

 **God of Fortune, Seven Gods of Fortune**

Ebisu [God from Japan]

Daikokuten [Daikokuten-God from India]

Benzaiten [Benzaiten-God from India]

Bishamonten [Bishamonten-God from India]

Fukurokuju [Fukurokuju-God from China]

Jurojin [Jurojin- Hermit from China]

Hoteiosho [Hoteiosho-Monk from China]

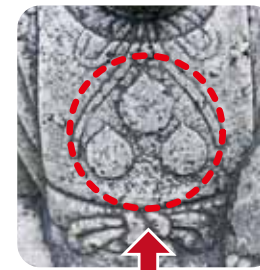


Ebisu

[God from Japan]

Generally, the Ebisu has a fishing rod in his right hand and carries a sea bream under his left arm. He is often worshipped as a "God of prosperous business."

How to visit Ebisu



Make a wish by touching his jewel, Hoju!

Some Ebisu have chestnut-like Hoju engraved on their chest or tall hat. Hoju is a wish-fulfilling jewel called "Chintamani" in Buddhist terminology. If you meet Ebisu with Hoju and make a wish by touching the Hoju, your wish may come true.



step 1 Let's check their blessings and touching episodes.

By reading the EBISU GUIDE BOOK and information boards near the Ebisu statues, let's study their features and the blessings that they may offer.



step 2 Lower your eyes a little and join your palms.

Small-sized Ebisu statues are mostly placed near the ground. So when praying, lower your eyes to avoid looking down on him and join your palms. As many worshippers pass their hand over not only his jewels but also his tall hat and sea bream, some statues have a smooth surface.

Saga City has the largest number of Ebisu statues in Japan.



The worship of Ebisu has become widespread in Saga and stone statues of Ebisu can be seen everywhere in the city. There are several stories depicting the reasons; it had been widely believed as a god of ocean because marine business using water channels once thrived in Saga or as a god of wealth because there were many merchants who prayed for their business success. The number of statues reaches over 800 only in Saga City! In 2011, Saga was authorized as the city with the largest number of Ebisu statues in Japan by a Nippon-1 organization.



Ebisu Station



This spot is good for a rest while wandering the town. It exhibits the statues of Ebisu, one of the Seven Gods of Fortune of Saga, who is said to have granted many blessings. Various materials related to Ebisu are collected here including a location map of Ebisu statues in Saga, a register of about 800 Ebisu, tours of 88 sacred Ebisu places, and Ebisu located in the Kyushu region. You can also buy many items related to Ebisu here.

- Opening hours / 10:00~17:00
- Location / 7-39 Gofuku-motomachi, Saga City
- Closed / Mondays (the following day if Monday is a holiday) The day after a national holiday and from late Dec. to early Jan.

☎0952-40-7137
<http://www.saga-ebisu.com/>

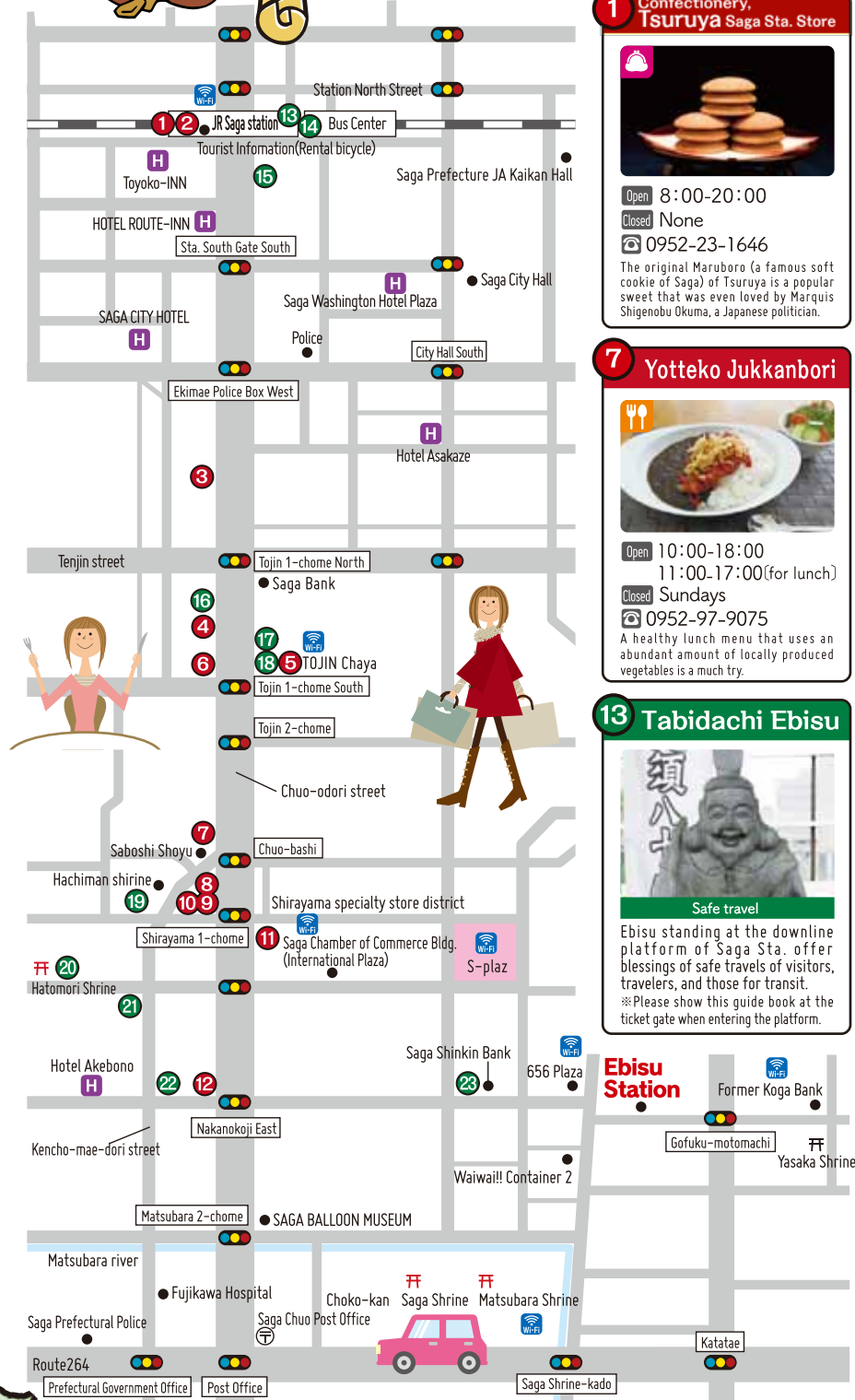




Let's take a tour of
Ebisu statues

JR Saga station ~Ebisu Station

Eat Shop Watch Wi-Fi



1 Confectionery, Tsuruya Saga Sta. Store



Open 8:00-20:00

Closed None

☎ 0952-23-1646

The original Maruboro (a famous soft cookie of Saga) of Tsuruya is a popular sweet that was even loved by Marquis Shigenobu Okuma, a Japanese politician.

2 Aratama, tonkatsu (pork cutlet)



Open 10:00-20:30

Closed January 1

☎ 0952-31-1212

Pork cutlet, its signature dish; the set menu; donburimono (a bowl of rice with food on top); and a-la-carte dishes are served at reasonable prices.

3 Muraokaya Honten



Open 9:00-19:00

Closed None

☎ 0952-22-4141

A line-up of sweets representing Saga, such as Ogi-yokan and Maruboro

4 Yatoji Denkichiro Hongo Tojin Store



Open 9:00-20:00

Closed January 1

☎ 0952-23-3914

Mukashi-yokan (azuki-bean jelly bar), with its moist and crispy surface, is popular. *Minutes on walking distance are calculated in 80 meters per minute.

5 TOJIN Chaya



Open 10:00-24:00

Closed December 29-January 1

☎ 0952-20-2063

An easy-to-stop-by café serves huge hotdogs and other specials of the day.

6 Muraoka Sohomo Tojin Store



Open 8:00-20:00

Closed None

☎ 0952-23-5017

Yokan (azuki-bean jelly bar), produced with a more than 100-year traditional method, has a pleasant aftertaste and refined sweetness.

7 Yotteko Jukkanbori



Open 10:00-18:00

11:00-17:00(for lunch)

Closed Sundays

☎ 0952-97-9075

A healthy lunch menu that uses an abundant amount of locally produced vegetables is a much try.

8 R-style Dining



Open 11:30-15:00(for Lunch)

17:30-22:00(for Dinner)

Closed Wednesdays

☎ 0952-22-5838

A restaurant known for its delicious pasta and pudding.

9 Shiruko Ippei



Open 10:30-18:00

Closed Irregular

☎ 0952-25-0535

A café featuring Japanese sweets established in 1931. Not only the shiruko (sweet azuki-bean soup with rice cake), but awazen is also a popular sweet of this café.

10 Restaurant Shirayama Bunga



Open 11:30-14:30(last order)

17:30-21:00 (last order) on weekdays

17:00-21:00 (last order) on weekends and holidays

Closed Mondays (the following day if Mondays is a holiday)

☎ 0952-23-4789

A long established restaurant that specializes in a refined French-style curry.

11 Kitajima Shirayama Honten



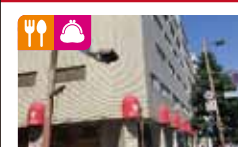
Open 9:00~20:00

Closed January 1

☎ 0952-26-4161

A long established store known for the specialty Saga sweet, Maruboro, which is popular for its simple taste.

12 Saga Tamaya



Open 10:00~18:30

Closed Irregular

☎ 0952-24-1151

A long-established department store sells delicacies and souvenirs of Saga Prefecture. **TAX FREE**

13 Tabidachi Ebisu



Safe travel

Ebisu standing at the downline platform of Saga Sta. offer blessings of safe travels of visitors, travelers, and those for transit.

※Please show this guide book at the ticket gate when entering the platform.

14 Hagakure Ebisu



Traffic safety

Ebisu at the Saga Sta. Bus Center, wishing traffic safety for the citizens, heals people's feeling with a happy smile all over his face.

15 Yokayoka Ebisu



Better luck with money / wealth

Ebisu standing next to a lottery ticket booth may give blessings to people in Saga Prefecture, which used to record the highest winning rate of large sum lotteries in Japan.

16 Kaifuku Ebisu



Prosperity in business/ Health and longevity

Although it was missing a right arm, it was repaired courtesy of a stone artisan. And thus became known as Kaifuku Ebisu (the recovered; the restored Ebisu.)

17 Ninja Ebisu



Prosperity in business

There remains a spy legend, in which this Ebisu was brought from Kuroda Domain in Fukuoka Prefecture as a Ninja (spy) who engaged in espionage in Saga Domain.

18 Tojin Ebisu



Prosperity in business

This Ebisu is impressive with his crow's foot, high nose and smiling face with his teeth fully shown. It is a rare statue made by the descendant of a sculptor of stone Buddha, exclusively employed by a lord of Saga Domain.

19 Kosodate Ebisu



Luck in pregnancy & smooth delivery happiness of children

Ebisu standing alongside the Yahata Shrine approach holds a baby. When visiting the shrine, why not lay your hand on the baby's head.

20 Hatomori Fukuta Ebisu



Praying for good catch of fish

Ebisu with moss marks has a profound appearance. Seeing Ebisu laughing while riding on a big whale is very rare.

21 Shihoju Ebisu



Peace to the household / traffic safety

This auspicious Ebisu has four hoju (jewels) on his head and belly. Touch the hoju while making a wish and it may come true.

22 Nikoniko Fukuwarai Ebisu



Prosperity in business / Traffic safety

This Ebisu stands at the corner of Saga Tamaya Department Store, wishing prosperity of surrounding stores. He smiles and watches over safety at the large traffic intersection.

23 Yumekoi Ebisu



Better luck with money

This Ebisu is said to bring blessings of great wealth. Due to its popularity, a visit to him is included in sightseeing tours.



Ebisu Station~Yanagi machi

Eat Shop Watch Wi-Fi

1 Daifukucho Ebisu



Prosperity in business

This Ebisu has an Edo-period accounting book laid out on his knees and a writing brush in hand. With a large smile, he will pray for a prosperous business.

2 Shamisen Ebisu



Prosperity in business / Art & culture

This Ebisu, whose hands playing Shamisen are reproduced faithfully, has a unique figure. A visit to him may make you a better musical instrument player.

3 Yasaka Joju Ebisu



Better luck with money

This Ebisu is enshrined in a small stone shrine in the precincts of Yasaka Shrine. It is said to be a lucky Ebisu that brings benefits especially in the realms of winning the lottery.

4 Akachan Ebisu



Luck in pregnancy and safe delivery

An Ebisu with the face of an infant. It is said that those who pray to this Ebisu will be blessed with a baby boy.

5 Fukuten Ebisu



Prosperity in business

This Ebisu sometimes goes to Tokyo to publicize Saga at events. He is said to invite good fortune.

6 Gofuku Ebisu



Prosperity in business

Enshrined at the Old Morinaga Residence at the Saga City Cultural Museum, this Ebisu gets its name from the fact that the Morinaga residence saw success as a kimono drapery (gofuku) store.

7 Tatami Ebisu



Prosperity in business/ Traffic safety

This Ebisu sits atop a tatami mat outside a Tatami store located near the intersection of Yanagi town and protects the people who go to-and-fro.

8 Zabuton Ebisu



Health and longevity

Sitting atop a zabuton (a Japanese style floor cushion), the Ebisu watches over those that passes by.

9 Yanagimachi Soroban Ebisu



Prosperity in business

In the Edo period, Yanagimachi prospered as a town of merchants. This is why he has soroban, or an abacus on his knees to wish for thriving business.

10 Mojitai Ebisu



Health and longevity

A historical Moji (character) Ebisu built in 1822 that has a sea bream engraved under the Chinese characters of "Nishinomiya."

11 Nakayoshi Ebisu



Harmonious marriage / Fulfillment in love

A pair of male and female Ebisu statues look like an intimate husband and wife. On the right is the husband and on the left is the wife who gently touches her husband.

12 Hidarikiki Ebisu



Traffic safety/ Health and longevity

This left handed Ebisu holds a sea bream in his right hand and a fishing rod in his left hand and watches over the 3-junction road.

13 Okao Ebisu



Prosperity in Business

At first glance you may be surprised because this Ebisu only has a face. However, with a calm and relaxed look, it looks as though it is soaking in an onsen (hot spring.)

14 Torikoji Ebisu



Traffic safety/ Health and longevity

From a small shrine, this Ebisu prays for the health of those who walk through the narrow alley.

15 Matsukawa-ya Ebisu



Prosperity in business

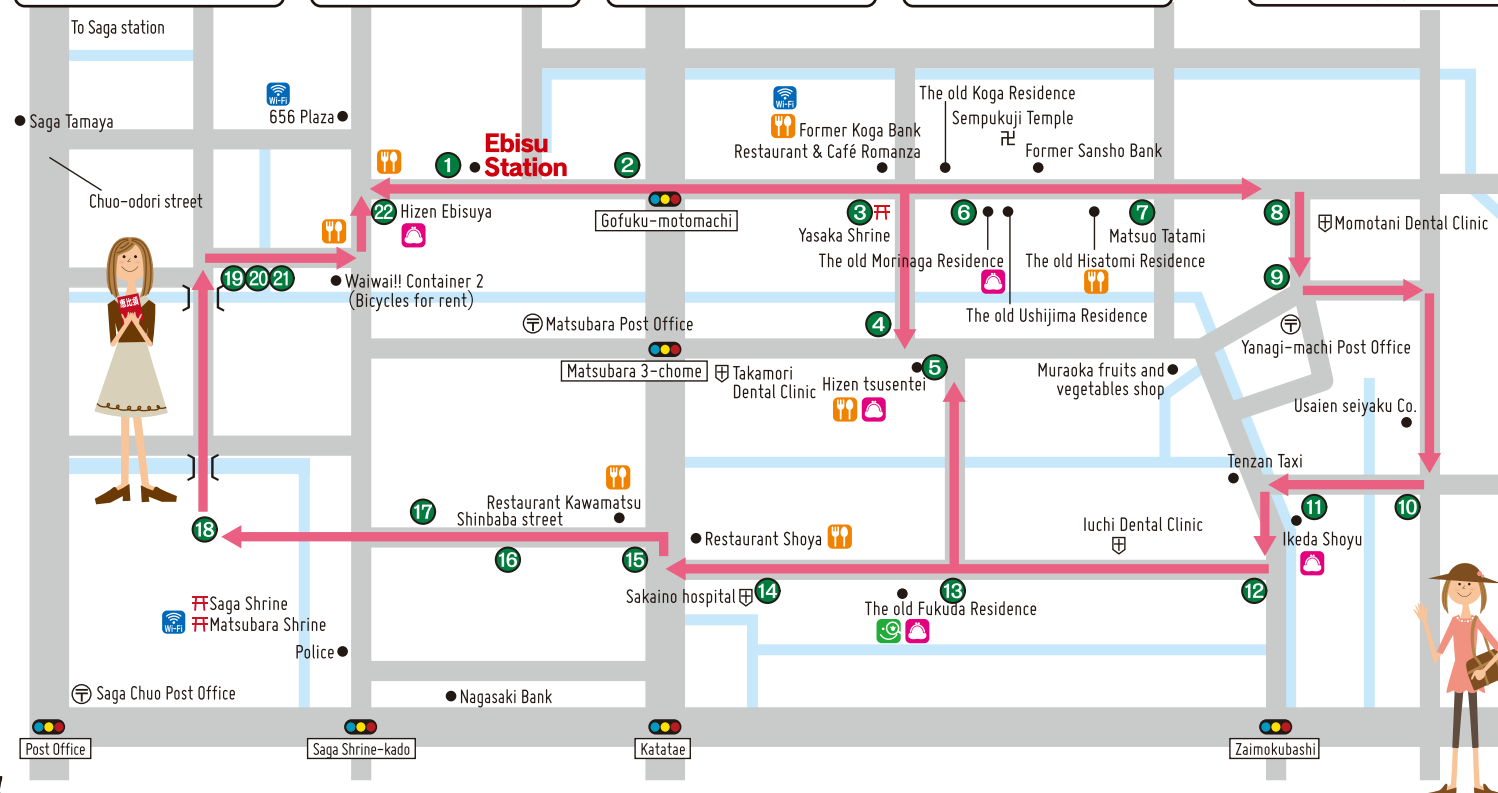
This Ebisu sits down as if he is a guardian at the northeast of Matsukawa-ya Inn. He has a graceful figure with a sea bream's tail fin engraved on his aureola.

16 Yomigaeri Ebisu



Health and longevity

This Ebisu was previously enshrined in the garden of a ryokan (Japanese style hotel) until it was moved where everyone can see.



17 Ekubo Ebisu



Fulfillment in love

Loved by everyone, this smiling Ebisu has a dimpled face.

18 Tonsan Ebisu



Prosperity in business

His dynamic style of fishing a sea bream and his more-than-3-meter height has a big impact on those praying. He is named after Tonosama, a feudal lord who is enshrined.

19 Higashiuomachi Ebisu



Prosperity in business

This Ebisu is known for the large jewel, known as hoju that is engraved on its chest. Although once forgotten, this Ebisu revived and attracts the eyes of many. Beside it, a Moji Ebisu is also enshrined.

20 Sokkuri Ebisu



Prosperity in business

With his round face, thick eyebrows, and a hanging earlobe, this Ebisu looks exactly like the then 2nd generation owner of the kimono drapery store.

21 Owarai Ebisu



Prosperity in business

With a big, toothy smile, this Ebisu prays for prosperity in business.

22 Michishirube Ebisu

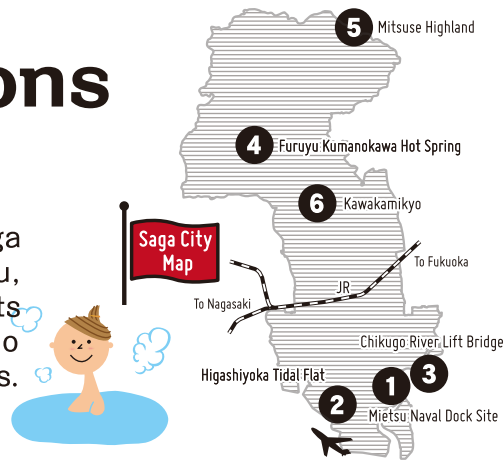


Better luck with money/ Safe journeys

This Ebisu stands by the guidepost of the Nagasaki-kaido Road, which was built approximately 400 years ago. The owner of the store where it is located is taking care of the Ebisu every day.

More attractions in Saga!

There are more charms that Saga City wants to introduce to you, such as world-class tourism spots and various events related to history, culture, food, and seasons.



1 Mietsu Naval Dock Site



One of the historic sites making up the World Heritage Site, "Japan's Meiji Industrial Revolution." These used to be naval facilities owned by the Saga domain, which repaired western-style vessels and constructed steam-powered ships in the late Edo period.

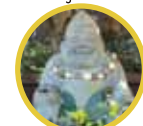
2 Higashiyoka Tidal Flat

This is a muddy tidal flat to which many migrant birds fly, and over 100 species of wild birds can be observed. It is registered under the Ramsar Convention as a tidal flat of international importance.



4 Furuyu/Kumanokawa Hot Spring

Temperature is moderate at 38°C, allowing users to stay in warm water longer and creating a remarkably relaxing effect. Comfortable in summer but also deeply warming in winter.



Yuagari Ebisu



Kameya Ebisu

Tsunetami Sano Memorial Museum



It exhibits materials and items related to SANO Tsunetami, the founder of Japan Red Cross. The information corner of the Mietsu Naval Dock Site is also here.

Open 9:00~19:00

Closed Mondays

(the following day if Monday is a holiday), late Dec. & early Jan.

Tel 0952-34-9455

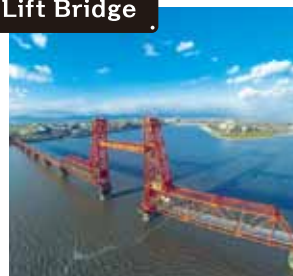
Fees 300 yen for adults, 100 yen for high school students and under



Hayatue Ebisu

3 Chikugo River Lift Bridge

Japan's only lift bridge with a length of 507m. The former National Railroad Saga Line used to run here and it has been redeveloped as a promenade for users to walk across.



Watashiba Ebisu

5 Mitsuse Highland

A healing natural spot surrounded by abundant greenery, clean water and air. From mid-July to early-Nov., a special campaign is held to introduce the charm of Mitsuse, including its food and hot springs.



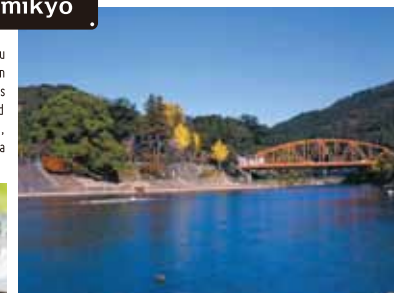
Taiko Ebisu



Mitsuse Yamabiko Chozyu Ebisu

6 Kawakamiko

A place of scenic beauty, here you can enjoy the cherry blossoms in the Spring and the Autumn leaves in the Fall. We recommend Shiratama Manjyu (a sweet, Japanese rice flour bun) that is a local specialty of Kawakamiko.



Shiratama Ebisu



Food・Traditional Crafts

Sicilian rice



This dish is normally made of rice topped with sautéed meat and fresh vegetables and mayonnaise. Over 30 shops serve this dish.

Saga beef



One of Japan's best-quality beef. It has distinctive marbled fat, which gives meat a soft texture and superbly rich taste.

Hizen Glassware



Its origin dates back to the late Edo period. The use of colors like cobalt-blue and ruby is impressive and it is appreciated for its highly-skilled technique and beauty.

Saga nishiki



A gorgeous craft work with gold and silver Japanese paper woven vertically and dyed silk yarn woven horizontally on a loom.



Mitsuse Soba (buckwheat noodles)

Unique soba shops are dotted alongside Soba Road at Mitsuse Highland. Only land with clean air and good-quality water can create such a food culture.



Saga sake

Saga Prefecture, producing high-grade rice thanks to clean water and fertile land, is famous as a production site of sake. At Gallery Yamato of Yamato Sake Brewery, Japanese sake and shochu can be sampled.

Hizen Nao Washi (Japanese paper)



Cotton carpets woven with skills from Chinese Dantsu have an over 300-year history. The skills have been handed over to date, while new modern patterns have been produced.

Nabeshima Dantsu (carpet)



Event information

From mid-February to late-March
Doll's Festival Saga



Dolls for Girl's Day wearing timeless beautiful kimono of Nabeshima-komon and Saga-nishiki are exhibited in various places.

Early August
Saga Sake-no-kuni Festival



A big summer event with Chuo-odori Avenue turning into a pedestrian paradise starting from Saga Station. Dancing programs, a parade and firework display are held.

Early November
Saga International Balloon Festival



Asia's largest international hot balloon festival with over 100 balloons. The late autumn sky is beautifully colored with a variety of balloons.

Early November
Shichimenso Festival



The leaves of shichimenso growing around Higashiyoka seashore turn into clear red as if a red carpet is placed over the coastline.

From late October to early January
Saga Light Fantasy



Illumination set up at various spots of Chuo-odori Ave. decorates the street with fantastic lights.

A taste of history. Let's walk the Castle Town of Nagasaki-kaido



1 Nagasaki-kaido



One of the roads from the Edo period, the Nagasaki-kaido is also known as Sugar Road for its use to carry sugar.

2 Hizentsusentei



This center is dedicated to displaying traditional local products and spreading information on Ko Yuga! Baisao, the founder of Sencha Tea Ceremony who was born in Saga. Here you can experience brewing Sencha Tea which is a popular attraction.

3 Saga Castle History Museum



The first reconstructed Honmaru Palace (main keep of a castle that was used as the residence of the castle owner in time of war) in Japan. At 2,500m² (8,202ft²), this wooden restoration is said to be the largest in Japan.

4 Saga Balloon Museum



Enjoy the ballooning experience whenever at the first ever balloon museum in Japan.

5 Saga City Cultural Museum



Former Koga Bank
The Koga Bank was established in Meiji18(1885) by Zenpei Koga who was a currency exchange dealer.



The old Fukuda Residence
This home was built in Taisho 7 (1918) in the modern Japanese architectural style. Here you can experience hand-weaving the traditional craft of "Saga Nishiki (form of brocading from Saga)."



The old Moringaga Residence
Souvenir shop「Sagashimono」
Traditional Crafts Nabeshima Dantsu「Orimonogatari」
Tea shop「Creha」



The old Hisatomi Residence
Cafe「Conekuriya」
Kimono rental「yosoidokoro FUTABA」